

Operator's manual

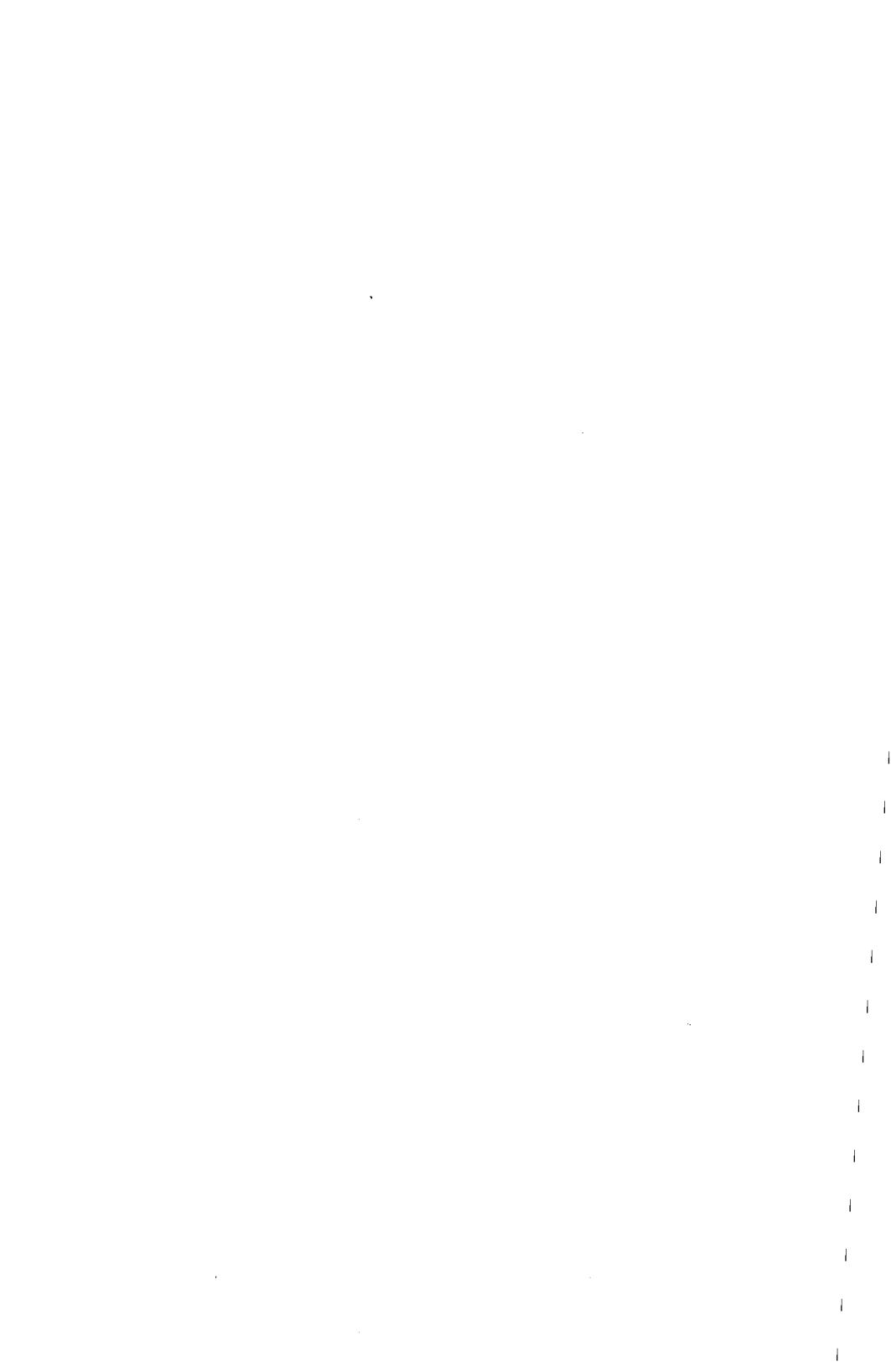
This correction booklet must be used in correlation with the 1986 Safari 377-377E-447-GL LC operator's manual (P/N 414 5721 00)

SAFARI GRANDLUXE LC



1986

414 5869 00

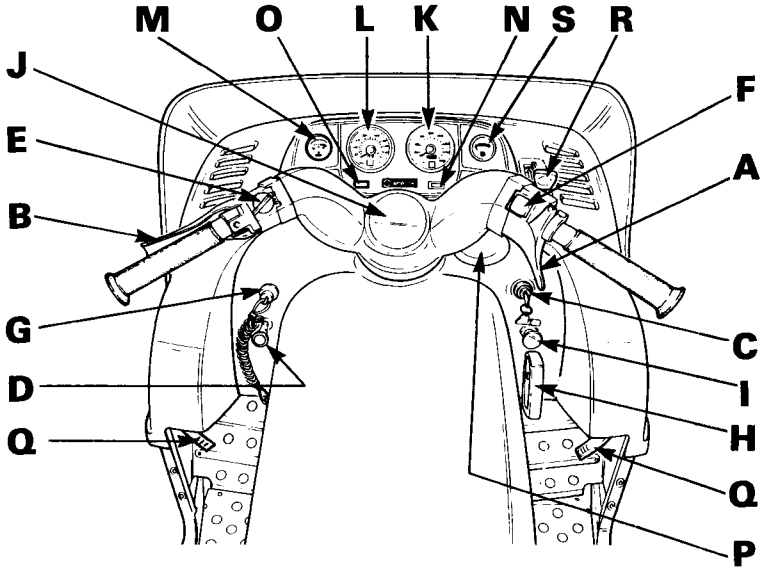


INDEX

○ **NOTE:** Information and instructions regarding the Safari GL LC model contained in the 1986 Safari 377, 377E, 447, GL LC operator's manual also apply to the Safari GL LC model exceptions are contained in this supplement.

CONTROLS/INSTRUMENTS	2
HOW TO IDENTIFY YOUR SNOWMOBILE	3
LUBRICATION	
Slide suspension	3
MAINTENANCE	
Suspension adjustment	4
TOOLS	5
SPECIFICATIONS	6

CONTROLS/INSTRUMENTS



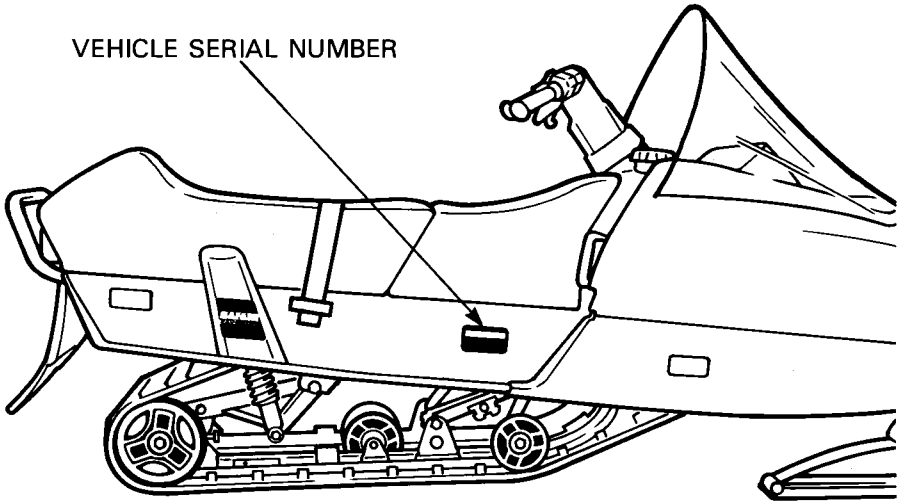
A009007009

- A) Throttle lever
- B) Brake lever
- C) Ignition switch
- D) Light switch (Electric model)
- E) Headlamp dimmer switch
- F) Emergency cut-out switch
- G) Tether cut-out switch
- H) Rewind starter handle
- I) Primer
- J) Adjustable steering handle
- K) Speedometer (Optional on some models)
- L) Tachometer (Optional on some models)
- M) Temperature gauge (On liquid cooled model only)
- N) Injection oil level pilot lamp (red) (Optional on some models)
- O) High beam pilot lamp (blue) (Optional on some models)
- P) Tank cap
- Q) Hood opening
- R) Retractable headlamp lever
- S) Electric fuel gauge

S) Electric fuel gauge

The electric fuel gauge is located in the dashboard and allows driver to observe the fuel level while riding the snowmobile.

HOW TO IDENTIFY YOUR SNOWMOBILE

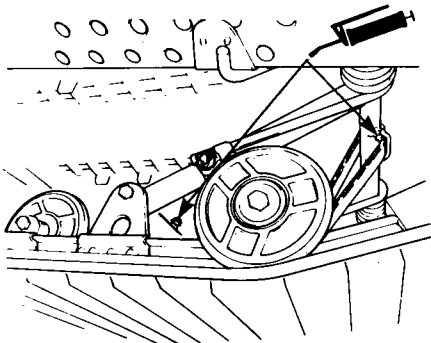


A012005001

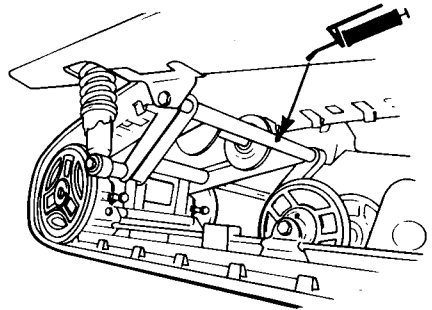
LUBRICATION

Slide suspension

Lubricate front & rear arms at grease fittings until grease appears at joints. Use low temperature grease only.



A014005007



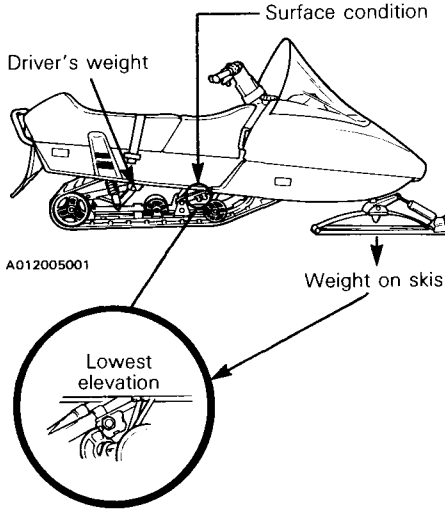
A014005008

MAINTENANCE

Suspension adjustment

The suspension is adjustable. The front adjustment for surface condition, the rear for driver's weight. Use the special keys located in tool box.

Adjuster blocks



A009005003

When the front adjuster blocks are at the lowest elevation more weight is distributed on the skis. At the highest position the weight is transferred from the skis to the track.

NOTE: For deep snow condition or hill climbing, it is recommended to place the front adjuster blocks on the highest position.

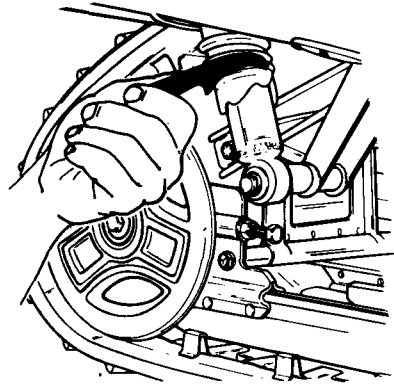
CAUTION: Always turn the left side adjuster blocks in a clockwise direction, the right side blocks in a counterclockwise direction. Left and right adjuster blocks of each adjustment must always be set at the same elevation.

The rear spring preload can be adjusted as follows:

lower position: 68 kg (150 lbs) or less

middle position: 68-82 kg (150-180 lbs)

highest position: 82 kg (180 lbs) and higher.



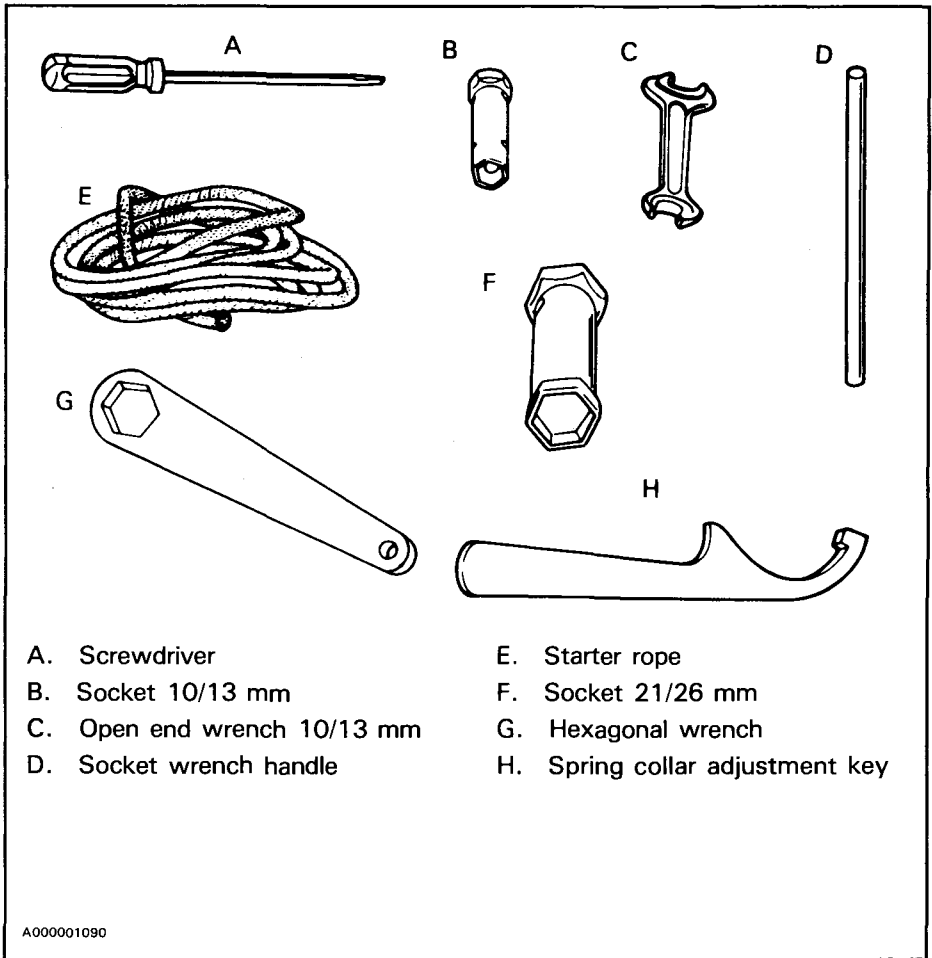
A014005013

To adjust, use the adjustment key supplied and turn the spring collar accordingly.

TOOLS

As standard equipment each new snowmobile is supplied with basic tools such as screwdriver, wrenches, emergency starter rope, etc..

Standard Tools



- A. Screwdriver
- B. Socket 10/13 mm
- C. Open end wrench 10/13 mm
- D. Socket wrench handle

- E. Starter rope
- F. Socket 21/26 mm
- G. Hexagonal wrench
- H. Spring collar adjustment key

A000001090

SPECIFICATIONS

Safari Grand Luxe LC

ENGINE

Type	532
No. of cylinders	2
Bore	72 mm (2.835")
Stroke	64 mm (2.520")
Displacement	521.2 cm ³ (26.64 in ³)
Compression ratio (corrected)	6.8:1
Maximum R.P.M.	7500
Carburetor type	Mikuni
Carburetor adjustment:	
— air screw	1 1/2 turn
— idle speed	1800-2000 R.P.M.
Rotary valve oil	568 ml
— SI reservoir	— Imp. 20 oz
Cooling system	— SI 4.5 L
capacity	— Imp. 160 oz
— U.S.	154 oz
Antifreeze/water mixture (% by volume)	60/40
Thermostat	43°C (110°F)
Radiator pressure cap	90 kPa (13 lbf/in ²)
Torque:	
— engine head nuts	M8: 21 N•m (15 lbf•ft)
— crankcase nuts	M6: 9 N•m (80 lbf•in)
	M8: 21 N•m (15 lbf•ft)
— magneto ring nut	M22: 85 N•m (63 lbf•ft)
— crankcase engine support nuts	M10: 38 N•m (28 lbf•ft)
— exhaust manifold bolts	M8: 21 N•m (15 lbf•ft)
— electrical starter bolts	M8: 21 N•m (15 lbf•ft)
	M5: 4 N•m (3 lbf•ft)

CHASSIS

Overall length	279.4 cm (110")
Overall width	96.5 cm (38")
Overall height	96.5 cm (38")
Ski stance (center to center)	81.9 cm (32.25")
Ski alignment (toe out)	3 mm (1/8")
Torque:	
— steering arm/ski leg bolt	50 N•m (37 lbf•ft)
— steering column/handlebar	26 N•m (19 lbf•ft)
Weight	216.4 kg (477 lb)
Bearing area	7594 cm ² (1177 in ²)
Ground pressure	2.85 kPa (.405 lb/in ²)

Safari Grand Luxe LC

POWER TRAIN

Track:	
— width	41.9 cm (16 1/2'')
— length	315 cm (124'')
— tension	
— alignment	13 mm (1/2'') gap between slide and bottom inside of track.
Standard gear ratio	Equal distance between edges of track guides and slider shoes. 21/37
Drive belt:	
— number	414 5233 00
— Max. width	34.9 mm (1 3/8'')
— Min. width	31.7 mm (1 1/4'')
Chaincase oil	200 ml (7 oz)

ELECTRICAL

Lighting system (output)	12 V. 160 W
Bulb:	
— headlamp	60/55 W
— tail/stop	5/21 W
— speedometer	5W
— tachometer	5W
— temperature gauge	2W
Fuse:	
— ignition switch	15 A
— starter solenoid	30 A
— tachometer	0.1 A
Spark plug	
— type	BR8ES
— gap	0.4 mm (0.016'')
Ignition timing:	
— timing mark (B.T.D.C.)	1.75 mm (.069'') (17°)
— stroboscopic timing	6000 R.P.M.

FUEL

Gas type	Regular leaded
Fuel tank capacity	
— SI	28.6 liters
— Imp.	6.3 gals
— U.S.	7.6 gals
Injection oil	
Type	Bombardier snowmobile injection oil
Tank capacity	
— SI	2.6 liters
— Imp.	92 oz
— U.S.	88 oz

BRAKE

Type	Disc, self adjusting
Lining minimum thickness	3 mm (1/8'')
Control lever adjustment	13 mm (1/2'') minimum distance from handle bar grip when fully applied.

N.A.: Non applicable

Bombardier Inc. reserves the right to make changes in design and specifications and/or to make additions to, or improvements in its product without imposing any obligation upon itself to install them on its products previously manufactured.

NOTES
